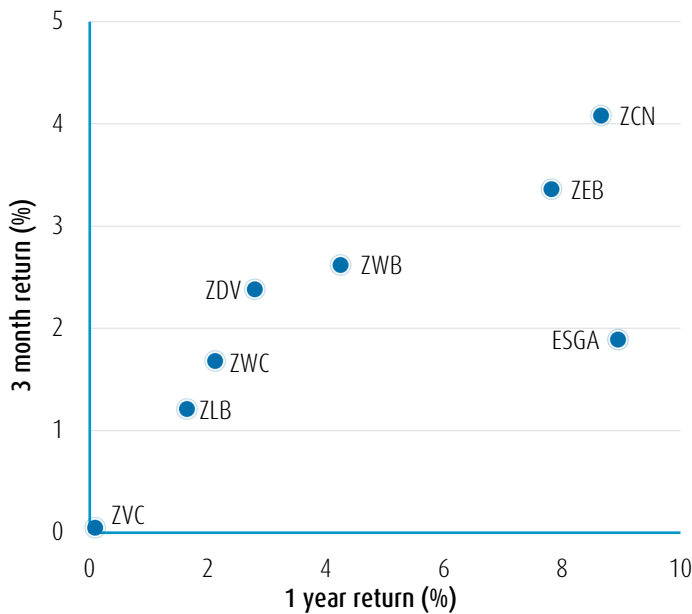


What's Trending: BMO ETFs

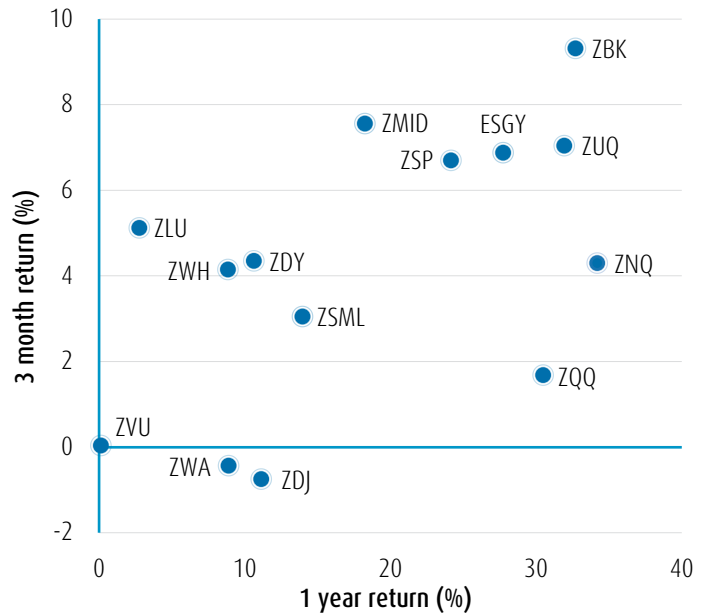
In April, the Canadian ETF industry reported AUM of \$452 billion. Key inflow categories for the month were U.S. Equity, Canadian Fixed Income and Financial Services Equity. BMO reported AUM at \$103.7 billion, and the top three selling ETFs were BMO Equal Weight Banks Index ETF (ticker: ZEB), BMO Ultra Short-Term Bond ETF (ticker: ZST), and BMO S&P 500 Index ETF (ticker: ZSP).*

* Industry figures reported inclusive of ETF of ETFs. Source: BMO ETFs as of April 30, 2024.

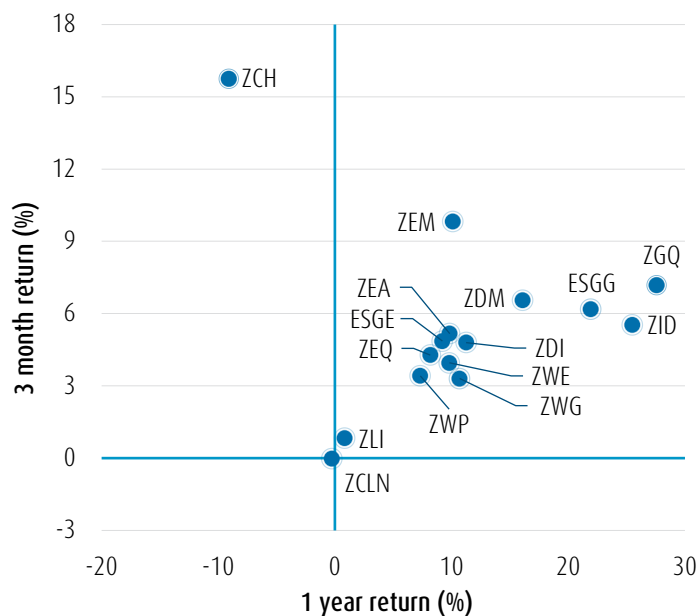
Canadian Equity



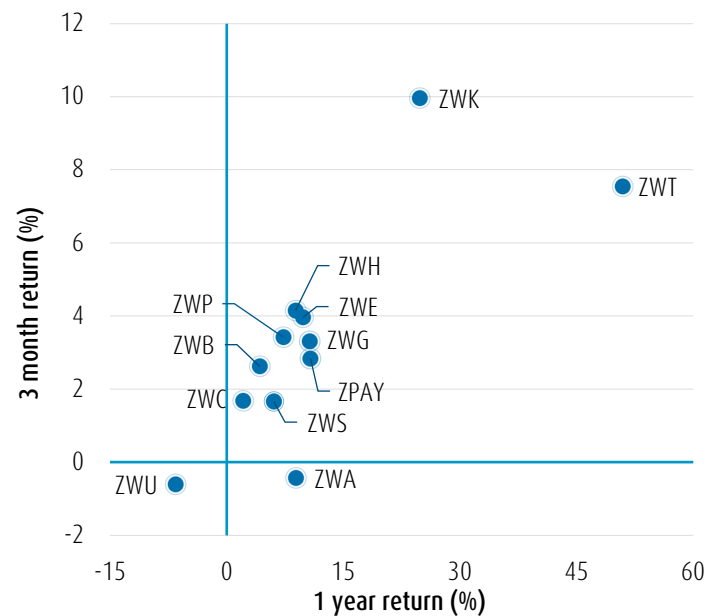
U.S. Equity



Global/International Equity

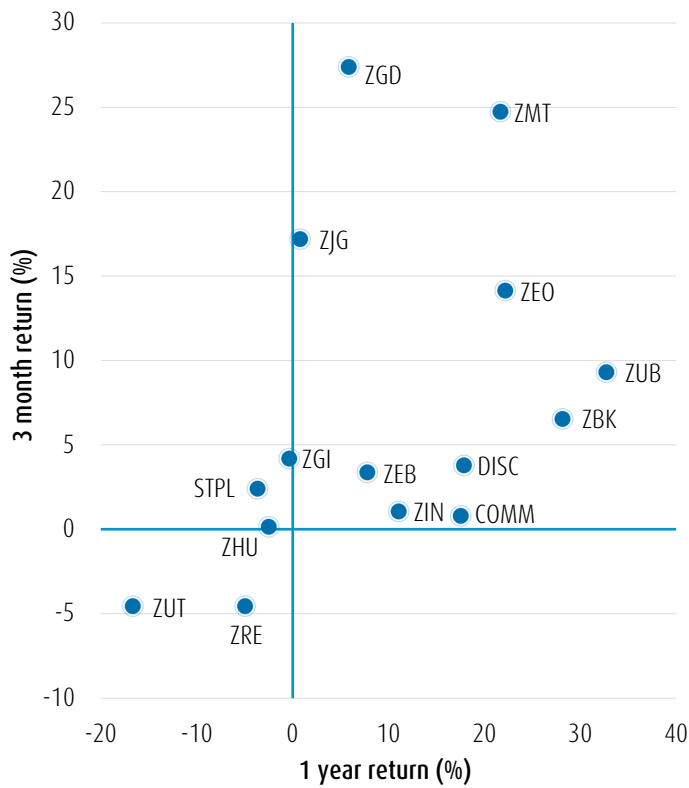


Covered Calls

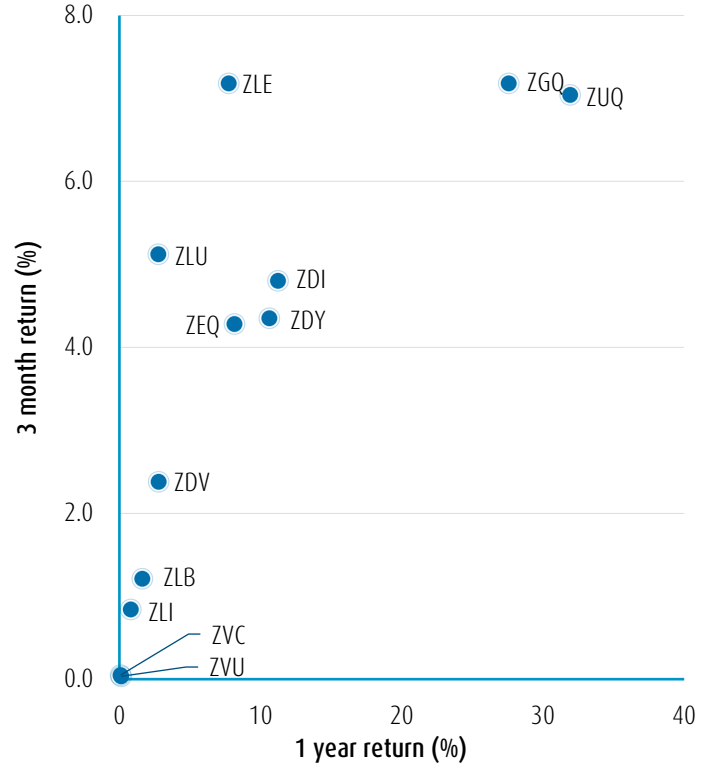


Source: BMO Global Asset Management, Bloomberg, April 30, 2024.

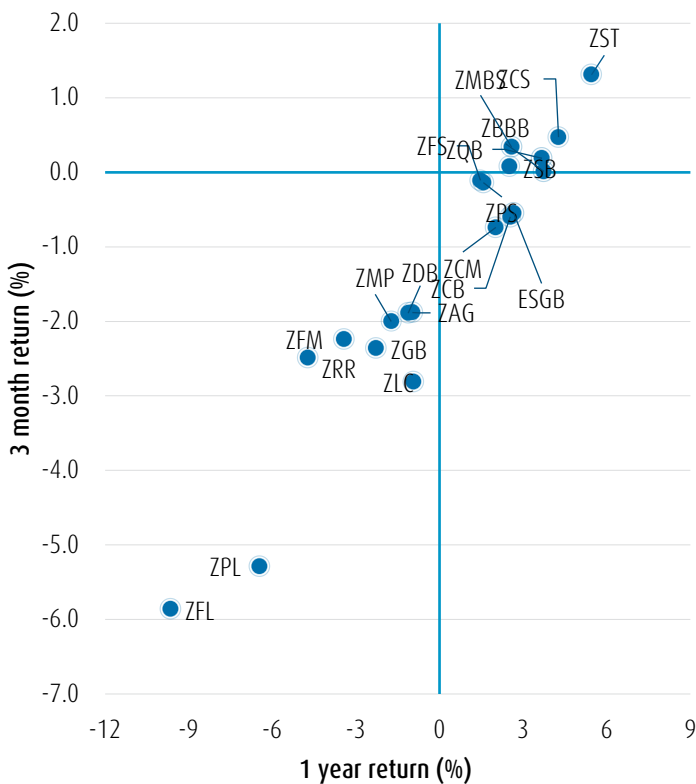
Industry Sectors



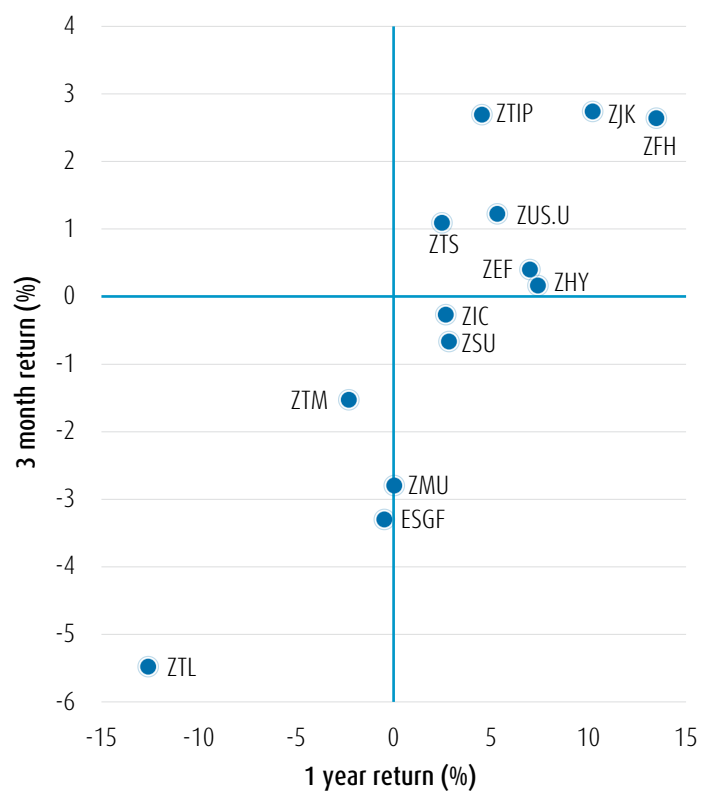
Factors



Canadian Fixed Income



U.S. Fixed Income



Source: BMO Global Asset Management, Bloomberg, April 30, 2024.

Performance

Broad Based Equity ETFs

Name	Ticker	Inception Date	YTD (%)	1 MO (%)	3 MO (%)	6 MO (%)	1 YR (%)	3 YR (%)	5 YR (%)	10 YR (%)	Since Inception
BMO Japan Index ETF (Hedged Units)	ZJPN.F	24-Jan-22	19.18	-0.90	10.55	24.44	41.33	-	-	-	23.80
BMO NASDAQ 100 Equity Index ETF	ZNQ	15-Feb-19	7.79	-2.91	4.30	20.35	34.22	12.47	18.56	-	20.25
BMO Nasdaq 100 Equity Index ETF (USD Units)	ZNQ.U	12-Feb-21	3.75	-4.46	1.86	21.24	32.10	8.29	-	-	7.86
BMO NASDAQ 100 Equity Hedged to CAD Index ETF	ZQQ	19-Jan-10	3.53	-4.59	1.68	20.43	30.50	7.26	16.52	16.71	16.56
BMO MSCI India ESG Leaders Index ETF	ZID	19-Jan-10	10.06	2.28	5.54	18.71	25.50	12.57	11.14	13.46	8.89
BMO S&P 500 Index ETF	ZSP	14-Nov-12	10.08	-2.54	6.70	19.86	24.18	11.86	13.43	14.55	16.98
BMO S&P 500 Index ETF (USD Units)	ZSP.U	14-Nov-12	5.95	-4.10	4.20	20.74	22.21	7.71	12.81	11.99	13.82
BMO S&P 500 Hedged to CAD Index ETF	ZUE	29-May-09	5.74	-4.22	4.04	19.99	20.71	6.67	11.42	10.94	12.74
BMO Japan Index ETF	ZJPN	24-Jan-22	8.91	-3.79	4.26	15.67	18.94	-	-	-	7.77
BMO S&P US Mid Cap Index ETF	ZMID	5-Feb-20	7.25	-4.50	7.56	20.77	18.26	6.76	-	-	9.99
BMO S&P US Mid Cap Index ETF (USD Units)	ZMID.U	5-Feb-20	3.23	-6.03	5.04	21.66	16.39	2.80	-	-	9.09
BMO MSCI EAFE Hedged to CAD Index ETF	ZDM	20-Oct-09	8.99	-1.20	6.56	18.02	16.08	9.88	9.25	8.17	7.62
BMO S&P US Mid Cap Index ETF (Hedged Units)	ZMID.F	5-Feb-20	2.87	-6.13	4.84	20.64	14.68	1.78	-	-	7.43
BMO S&P US Small Cap Index ETF	ZSML	5-Feb-20	0.42	-4.07	3.05	17.03	13.98	3.04	-	-	7.37
BMO S&P US Small Cap Index ETF (USD Units)	ZSML.U	5-Feb-20	-3.34	-5.61	0.64	17.89	12.18	-0.78	-	-	6.48
BMO Dow Jones Industrial Average Hedged to CAD Index ETF	ZDJ	29-May-09	0.47	-5.09	-0.75	14.41	11.16	4.24	7.65	9.38	11.63
BMO S&P US Small Cap Index ETF (Hedged Units)	ZSML.F	5-Feb-20	-3.75	-5.71	0.41	16.74	10.36	-1.82	-	-	4.76
BMO MSCI Emerging Markets Index ETF	ZEM	20-Oct-09	5.93	1.40	9.82	13.05	10.09	-2.74	2.23	4.86	4.25
BMO MSCI EAFE Index ETF	ZEA	10-Feb-14	6.30	-1.59	5.17	16.01	9.84	6.40	6.46	6.63	6.89
BMO S&P/TSX Capped Composite Index ETF	ZCN	29-May-09	4.65	-1.82	4.08	16.85	8.66	7.53	8.85	7.20	7.63
BMO MSCI China ESG Leaders Index ETF	ZCH	19-Jan-10	5.28	7.41	15.74	-0.37	-9.09	-23.30	-11.18	-0.37	0.38

Factor ETFs

Name	Ticker	Inception Date	YTD (%)	1 MO (%)	3 MO (%)	6 MO (%)	1 YR (%)	3 YR (%)	5 YR (%)	10 YR (%)	Since Inception
BMO MSCI USA High Quality Index ETF	ZUQ	5-Nov-14	12.00	-2.85	7.04	21.59	31.95	13.77	15.26	-	16.07
BMO MSCI USA High Quality Index ETF (USD Units)	ZUQ.U	16-Jul-20	7.80	-4.41	4.54	22.48	29.86	9.55	-	-	14.23
BMO MSCI USA High Quality Index ETF (Hedged Units)	ZUQ.F	16-Jul-20	7.54	-4.48	4.40	21.73	28.43	8.61	-	-	13.15
BMO MSCI All Country World High Quality Index ETF	ZGQ	5-Nov-14	11.15	-2.23	7.18	21.21	27.59	10.86	13.82	-	13.89
BMO International Dividend Hedged to CAD ETF	ZDH	2-Sep-15	8.77	-0.34	6.09	15.50	16.44	12.86	8.70	-	8.48
BMO MSCI USA Value Index ETF	ZVU	4-Oct-17	4.15	-5.34	3.58	15.69	14.28	5.06	7.01	-	7.71
BMO International Dividend ETF	ZDI	5-Nov-14	6.34	-0.64	4.80	13.74	11.25	10.27	6.40	-	6.48
BMO US Dividend ETF	ZDY	19-Mar-13	6.89	-2.54	4.35	13.85	10.64	9.58	6.88	10.97	12.45
BMO MSCI Canada Value Index ETF	ZVC	4-Oct-17	5.48	-2.71	5.01	14.95	9.76	11.49	9.15	-	8.21
BMO US Dividend ETF (USD Units)	ZDY.U	19-Mar-13	2.89	-4.10	1.91	14.69	8.89	5.53	6.31	8.49	9.54
BMO MSCI Europe High Quality Hedged to CAD Index ETF	ZEQ	10-Feb-14	5.88	-1.52	4.28	16.35	8.18	6.97	9.74	9.39	9.75
BMO Low Volatility Emerging Markets Equity ETF	ZLE	17-May-16	4.27	1.30	7.18	9.45	7.77	-1.98	-1.62	-	0.84
BMO US Dividend Hedged to CAD ETF	ZUD	19-Mar-13	2.84	-4.12	1.85	13.94	7.69	4.86	5.24	7.61	8.79
BMO Low Volatility International Equity Hedged to CAD ETF	ZLD	10-Feb-16	3.38	-1.55	1.43	10.40	5.39	4.85	3.94	-	6.46
BMO Canadian Dividend ETF	ZDV	21-Oct-11	2.16	-2.61	2.38	14.46	2.80	7.58	7.26	5.52	6.93
BMO Low Volatility US Equity ETF	ZLU	19-Mar-13	7.49	-1.02	5.12	9.96	2.78	8.77	8.49	11.99	13.42
BMO Low Volatility Canadian Equity ETF	ZLB	21-Oct-11	2.15	-1.77	1.21	11.71	1.65	7.21	8.23	9.72	11.46
BMO Low Volatility US Equity ETF (USD Units)	ZLU.U	19-Mar-13	3.46	-2.61	2.67	10.77	1.15	4.73	7.90	9.48	10.48
BMO Low Volatility International Equity ETF	ZLI	2-Sep-15	1.87	-1.66	0.84	9.07	0.83	2.32	1.78	-	4.71
BMO Low Volatility US Equity Hedged to CAD ETF	ZLH	10-Feb-16	3.45	-2.60	2.62	10.19	0.26	4.24	7.05	-	8.25

Enhanced Income ETFs

Name	Ticker	Inception Date	YTD (%)	1 MO (%)	3 MO (%)	6 MO (%)	1 YR (%)	3 YR (%)	5 YR (%)	10 YR (%)	Since Inception
BMO Covered Call Technology ETF	ZWT	20-Jan-21	14.69	-3.37	7.54	27.82	50.92	15.28	-	-	15.83
BMO Covered Call US Banks ETF	ZWK	15-Feb-19	12.29	-0.69	9.96	34.07	24.83	-4.48	0.02	-	0.82
BMO Covered Call Energy ETF	ZWEN	23-Jan-23	11.23	-0.29	10.30	8.61	17.25	-	-	-	-
BMO US Put Write ETF	ZPW	2-Sep-15	3.03	-2.35	3.16	7.49	13.30	9.57	5.87	-	4.58
BMO US Put Write ETF (USD Units)	ZPW.U	2-Sep-15	-0.83	-3.91	0.75	8.27	11.51	5.51	5.32	-	4.20
BMO Premium Yield ETF	ZPAY	15-Jan-20	4.36	-0.03	2.83	6.85	10.79	7.62	-	-	7.09
BMO Global High Dividend Covered Call ETF	ZWG	16-Jan-20	5.94	-2.25	3.31	11.89	10.68	7.14	-	-	6.90
BMO US Put Write Hedged to CAD ETF	ZPH	9-Feb-17	-0.89	-3.93	0.70	7.61	10.48	4.95	4.56	-	3.30
BMO Europe High Dividend Covered Call Hedged to CAD ETF	ZWE	9-Sep-15	5.87	-0.85	3.96	12.71	9.81	10.06	7.22	-	7.45
BMO Premium Yield ETF (USD Units)	ZPAY.U	15-Jan-20	0.45	-1.63	0.43	7.63	9.03	3.63	-	-	5.77
BMO Covered Call Dow Jones Industrial Average Hedged to CAD ETF	ZWA	20-Oct-11	0.44	-4.38	-0.43	11.38	8.91	3.94	7.03	7.97	9.54
BMO US High Dividend Covered Call ETF	ZWH	10-Feb-14	6.81	-2.24	4.15	11.57	8.87	8.73	7.94	10.10	10.55
BMO Premium Yield ETF (Hedged Units)	ZPAY.F	21-Jan-20	0.41	-1.62	0.42	7.08	8.18	3.19	-	-	4.98
BMO Europe High Dividend Covered Call ETF	ZWP	2-Mar-18	4.74	-0.71	3.42	12.34	7.31	9.34	6.27	-	5.42
BMO US High Dividend Covered Call ETF (US Dollar Units)	ZWH.U	12-Feb-15	2.81	-3.81	1.72	12.39	7.15	4.70	7.37	-	7.60
BMO US High Dividend Covered Call Hedged to CAD ETF	ZWS	2-Mar-18	2.78	-3.82	1.66	11.72	6.06	4.06	6.34	-	6.08
BMO Covered Call Canadian Banks ETF	ZWB	28-Jan-11	1.24	-3.48	2.62	17.49	4.25	2.97	5.27	6.67	7.69
BMO Covered Call Health Care ETF	ZWHC	23-Jan-23	4.35	-3.65	0.44	7.34	2.72	-	-	-	-
BMO Covered Call Canadian Banks ETF (US Dollar Units)	ZWB.U	24-Jan-22	-2.55	-5.03	0.22	18.36	2.60	-	-	-	-6.32
BMO Canadian High Dividend Covered Call ETF	ZWC	9-Feb-17	1.39	-2.70	1.68	12.32	2.13	5.72	4.49	-	4.72
BMO Covered Call Utilities ETF	ZWU	20-Oct-11	-0.40	-1.16	-0.61	8.04	-6.56	-0.28	1.79	2.85	3.73

Sector ETFs

Name	Ticker	Inception Date	YTD (%)	1 MO (%)	3 MO (%)	6 MO (%)	1 YR (%)	3 YR (%)	5 YR (%)	10 YR (%)	Since Inception
BMO Equal Weight US Banks Index ETF	ZBK	10-Feb-14	11.87	-1.73	9.31	39.63	32.73	-1.52	3.82	8.93	8.83
BMO Equal Weight US Banks Hedged to CAD Index ETF	ZUB	19-May-10	7.34	-3.40	6.53	39.17	28.16	-6.26	1.38	5.06	6.10
BMO Equal Weight Oil & Gas Index ETF	ZEO	20-Oct-09	15.81	1.38	14.14	12.70	22.19	29.08	14.64	0.98	1.74
BMO Equal Weight Global Base Metals Hedged to CAD Index ETF	ZMT	20-Oct-09	18.59	7.26	24.74	42.11	21.71	6.30	9.55	1.16	-0.02
BMO Global Consumer Discretionary Hedged to CAD Index ETF	DISC	7-Apr-17	3.85	-4.66	3.79	17.85	17.90	2.77	9.63	-	10.31
BMO Global Communications Index ETF	COMM	2-May-18	5.93	-3.32	0.79	12.95	17.57	4.08	8.16	-	9.54
BMO Equal Weight Industrials Index ETF	ZIN	14-Nov-12	2.10	-4.70	1.06	17.27	11.08	5.35	8.54	7.47	10.55
BMO Equal Weight Banks Index ETF	ZEB	20-Oct-09	1.46	-4.05	3.36	22.01	7.82	5.59	8.09	8.83	10.07
BMO Equal Weight Global Gold Index ETF	ZGD	14-Nov-12	16.63	5.98	27.39	25.21	5.86	7.76	15.57	7.16	1.41
BMO Junior Gold Index ETF	ZJG	19-Jan-10	9.98	3.37	17.19	16.14	0.81	4.36	11.53	5.32	-1.23
BMO Global Infrastructure Index ETF	ZGI	19-Jan-10	1.50	-1.08	4.18	8.21	-0.34	6.63	5.27	7.28	10.61
BMO Equal Weight US Health Care Index ETF	ZHU	15-Feb-19	1.85	-5.10	0.15	13.99	-2.46	0.65	7.22	-	6.60
BMO Global Consumer Staples Hedged to CAD Index ETF	STPL	7-Apr-17	3.63	-0.50	2.41	6.77	-3.65	3.84	4.93	-	4.58
BMO Equal Weight REITs Index ETF	ZRE	19-May-10	-4.61	-4.39	-4.55	11.94	-4.95	-2.12	1.71	5.13	7.26
BMO Equal Weight US Health Care Hedged to CAD Index ETF	ZUH	19-May-10	-2.29	-6.78	-2.43	13.92	-5.55	-4.08	5.49	8.31	11.83
BMO Global Agriculture ETF	ZEAT	23-Jan-23	1.86	-2.91	7.00	5.33	-9.05	-	-	-	-
BMO Equal Weight Utilities Index ETF	ZUT	19-Jan-10	-6.93	-2.46	-4.55	6.17	-16.65	-5.44	4.54	5.91	6.06

Responsible Investing ETFs

Name	Ticker	Inception Date	YTD (%)	1 MO (%)	3 MO (%)	6 MO (%)	1 YR (%)	3 YR (%)	5 YR (%)	10 YR (%)	Since Inception
BMO MSCI USA ESG Leaders Index ETF	ESGY	15-Jan-20	10.84	-3.01	6.88	21.76	27.75	12.53	-	-	13.93
BMO MSCI Global ESG Leaders Index ETF	ESGG	16-Jan-20	9.34	-2.51	6.18	20.19	21.93	10.42	-	-	11.05
BMO MSCI ACWI Paris Aligned Climate Equity Index ETF	ZGRN	24-Jan-22	6.89	-2.56	5.06	18.45	16.97	-	-	-	7.70

Responsible Investing ETFs (cont.)

Name	Ticker	Inception Date	YTD (%)	1 MO (%)	3 MO (%)	6 MO (%)	1 YR (%)	3 YR (%)	5 YR (%)	10 YR (%)	Since Inception
BMO MSCI EAFE ESG Leaders Index ETF	ESGE	16-Jan-20	6.33	-1.16	4.86	16.45	9.20	6.04	-	-	5.68
BMO MSCI Canada ESG Leaders Index ETF	ESGA	15-Jan-20	1.77	-1.90	1.89	17.05	8.95	3.85	-	-	6.58
BMO ESG High Yield US Corporate Bond Index ETF	ESGH	12-Feb-21	3.11	0.10	2.23	7.38	8.50	3.30	-	-	2.01
BMO ESG High Yield US Corporate Bond Index ETF (Hedged Units)	ESGH.F	12-Feb-21	-0.99	-1.58	-0.31	7.66	5.82	-0.98	-	-	-0.94
BMO ESG Corporate Bond Index ETF	ESGB	15-Jan-20	-1.18	-1.28	-0.55	5.78	2.66	-0.74	-	-	0.20
BMO ESG US Corporate Bond Hedged to CAD Index ETF	ESGF	15-Jan-20	-3.62	-2.75	-3.30	6.46	-0.47	-4.13	-	-	-2.21
BMO Clean Energy Index ETF	ZCLN	20-Jan-21	-12.15	-3.93	-2.19	1.45	-27.25	-12.35	-	-	-19.83

Fixed Income ETFs

Canadian Precise Market

Name	Ticker	Inception Date	YTD (%)	1 MO (%)	3 MO (%)	6 MO (%)	1 YR (%)	3 YR (%)	5 YR (%)	10 YR (%)	Since Inception
BMO Short Corporate Bond Index ETF (Accumulating Units)	ZCS.L	9-Feb-17	0.48	-0.36	0.47	4.53	4.28	0.64	1.87	-	1.94
BMO Short Corporate Bond Index ETF	ZCS	20-Oct-09	0.48	-0.37	0.47	4.52	4.27	0.63	1.87	2.10	2.58
BMO Mid Corporate Bond Index ETF	ZCM	19-Jan-10	-1.32	-1.43	-0.74	6.85	2.02	-1.10	1.31	2.60	3.67
BMO Short Provincial Bond Index ETF (Accumulating Units)	ZPS.L	9-Feb-17	-0.50	-0.50	-0.14	2.71	1.58	-0.47	0.74	-	0.96
BMO Short Provincial Bond Index ETF	ZPS	20-Oct-09	-0.50	-0.50	-0.14	2.70	1.58	-0.47	0.73	1.21	1.73
BMO Short Federal Bond Index ETF	ZFS	20-Oct-09	-0.43	-0.46	-0.11	2.37	1.47	-0.52	0.54	0.86	1.31
BMO Short Federal Bond Index ETF (Accumulating)	ZFS.L	9-Feb-17	-0.43	-0.46	-0.11	2.37	1.47	-0.52	0.54	-	0.67
BMO Long Corporate Bond Index ETF	ZLC	19-Jan-10	-5.15	-3.38	-2.81	8.16	-0.93	-2.85	-0.42	2.61	4.41
BMO Mid Provincial Bond Index ETF	ZMP	19-Mar-13	-3.28	-2.05	-2.00	4.26	-1.73	-2.20	0.02	1.79	1.78
BMO Mid Federal Bond Index ETF	ZFM	29-May-09	-3.67	-2.17	-2.24	3.82	-3.43	-3.20	-1.08	0.79	2.03
BMO Long Provincial Bond Index ETF	ZPL	19-Mar-13	-8.56	-4.72	-5.29	5.45	-6.45	-6.09	-2.81	1.56	1.39
BMO Long Federal Bond Index ETF	ZFL	19-May-10	-9.85	-5.25	-5.86	4.87	-9.65	-7.49	-4.35	0.12	1.82

Canadian Fixed Income

Name	Ticker	Inception Date	YTD (%)	1 MO (%)	3 MO (%)	6 MO (%)	1 YR (%)	3 YR (%)	5 YR (%)	10 YR (%)	Since Inception
BMO Canadian Bank Income Index ETF	ZBI	24-Jan-22	4.61	0.76	3.38	9.56	9.53	-	-	-	1.68
BMO Ultra Short-Term Bond ETF (Accumulating Units)	ZST.L	9-Feb-17	1.76	0.42	1.31	2.85	5.45	2.78	2.33	-	2.19
BMO Ultra Short-Term Bond ETF	ZST	28-Jan-11	1.76	0.42	1.31	2.85	5.45	2.78	2.32	1.93	1.99
BMO Money Market Fund ETF Series	ZMMK	29-Nov-21	1.70	0.42	1.26	2.59	5.18	-	-	-	3.57
BMO BBB Corporate Bond Index ETF	ZBBB	5-Feb-20	-0.17	-0.73	0.01	5.61	3.74	0.13	-	-	1.21
BMO Corporate Discount Bond ETF	ZCDB	24-Jan-22	-0.06	-0.67	0.06	4.97	3.67	-	-	-	0.62
BMO High Quality Corporate Bond Index ETF	ZQB	5-Feb-20	0.07	-0.57	0.19	4.60	3.67	0.11	-	-	0.99
BMO Short-Term Discount Bond ETF	ZSDB	24-Jan-22	-0.11	-0.46	0.10	3.37	2.85	-	-	-	0.69
BMO Canadian MBS Index ETF	ZMBS	5-Feb-20	0.19	-0.14	0.34	2.45	2.59	0.07	-	-	0.88
BMO Corporate Bond Index ETF	ZCB	2-Mar-18	-1.32	-1.31	-0.60	5.76	2.54	-0.74	1.06	-	1.72
BMO Short-Term Bond Index ETF	ZSB	2-Mar-18	-0.11	-0.42	0.08	3.21	2.51	-0.06	1.08	-	1.46
BMO Aggregate Bond Index ETF	ZAG	19-Jan-10	-3.25	-2.04	-1.88	4.40	-0.97	-2.29	-0.20	1.60	2.45
BMO Discount Bond Index ETF	ZDB	10-Feb-14	-3.27	-2.06	-1.89	4.39	-1.12	-2.45	-0.10	1.61	1.69
BMO Government Bond Index ETF	ZGB	2-Mar-18	-3.95	-2.31	-2.36	3.83	-2.28	-2.96	-0.74	-	0.36
BMO Real Return Bond Index ETF	ZRR	19-May-10	-5.54	-3.68	-2.49	4.90	-4.72	-3.08	-0.96	1.05	2.15

US/Global Fixed Income

Name	Ticker	Inception Date	YTD (%)	1 MO (%)	3 MO (%)	6 MO (%)	1 YR (%)	3 YR (%)	5 YR (%)	10 YR (%)	Since Inception
BMO Floating Rate High Yield ETF	ZFH	10-Feb-14	3.21	-0.46	2.64	9.89	13.49	6.07	4.12	4.82	4.79
BMO High Yield US Corporate Bond Index ETF	ZJK	4-Oct-17	4.01	0.62	2.74	8.49	10.22	4.64	3.15	-	4.38
BMO High Yield US Corporate Bond Index ETF (USD Units)	ZJK.U	12-Feb-21	0.11	-1.00	0.33	9.28	8.46	0.76	-	-	0.81
BMO High Yield US Corporate Bond Hedged to CAD Index ETF	ZHY	20-Oct-09	-0.14	-1.07	0.16	8.71	7.41	0.06	1.70	2.34	4.50

US/Global Fixed Income (cont.)

Name	Ticker	Inception Date	YTD (%)	1 MO (%)	3 MO (%)	6 MO (%)	1 YR (%)	3 YR (%)	5 YR (%)	10 YR (%)	Since Inception
BMO Emerging Markets Bond Hedged to CAD Index ETF	ZEF	21-May-10	0.38	-1.80	0.40	7.67	7.00	-3.09	-0.51	1.43	3.25
BMO Ultra Short-Term US Bond ETF (USD Units)	ZUS.U	15-Feb-19	1.69	0.40	1.22	2.86	5.33	2.56	2.05	-	2.02
BMO Ultra Short-Term US Bond ETF (US Dollar Accumulating Units)	ZUS.V	15-Feb-19	1.69	0.40	1.22	2.86	5.33	2.56	2.05	-	2.07
BMO Short-Term US TIPS Index ETF	ZTIP	20-Jan-21	4.68	1.52	2.69	2.18	4.53	5.77	-	-	4.83
BMO Short-Term US TIPS Index ETF (USD Units)	ZTIP.U	20-Jan-21	0.76	-0.11	0.28	2.93	2.87	1.84	-	-	2.14
BMO Short-Term US IG Corporate Bond Hedged to CAD Index ETF	ZSU	10-Feb-14	-0.32	-0.70	-0.67	3.73	2.85	-0.70	0.97	1.33	1.32
BMO Mid-Term US IG Corporate Bond Index ETF	ZIC	19-Mar-13	1.05	-0.75	-0.27	6.64	2.68	1.02	1.56	4.61	4.86
BMO Short-Term US Treasury Bond Index ETF	ZTS	28-Feb-17	2.89	0.78	1.09	1.30	2.49	2.58	1.05	-	1.20
BMO Short-Term US TIPS Index ETF (Hedged Units)	ZTIP.F	20-Jan-21	0.56	-0.17	0.14	2.57	2.10	1.47	-	-	1.77
BMO Mid-Term US IG Corporate Bond Index ETF (USD Units)	ZIC.U	19-Mar-13	-2.74	-2.34	-2.60	7.42	1.06	-2.72	0.98	2.21	2.09
BMO Short-Term US Treasury Bond Index ETF (USD Units)	ZTS.U	28-Feb-17	-0.96	-0.84	-1.27	2.04	0.87	-1.22	0.48	-	0.68
BMO US TIPS Index ETF	TIPS	23-Jan-23	2.23	-0.02	0.42	2.84	0.22	-	-	-	-
BMO Mid-Term US IG Corporate Bond Hedged to CAD Index ETF	ZMU	20-Mar-13	-3.02	-2.43	-2.80	6.80	0.04	-3.35	0.31	1.86	1.87
BMO US Aggregate Bond Index ETF	ZUAG	23-Jan-23	0.36	-0.95	-0.88	4.12	-0.19	-	-	-	-
BMO US TIPS Index ETF (USD Units)	TIPS.U	23-Jan-23	-1.60	-1.62	-1.93	3.59	-1.37	-	-	-	-
BMO US Aggregate Bond Index ETF (USD Units)	ZUAG.U	23-Jan-23	-3.40	-2.54	-3.20	4.89	-1.77	-	-	-	-
BMO US TIPS Index ETF (Hedged Units)	TIPS.F	23-Jan-23	-1.83	-1.69	-2.09	3.11	-2.27	-	-	-	-
BMO Mid-Term US Treasury Bond Index ETF	ZTM	28-Feb-17	0.01	-1.07	-1.53	2.60	-2.29	-0.58	-0.23	-	0.52
BMO US Aggregate Bond Index ETF (Hedged Units)	ZUAG.F	23-Jan-23	-3.67	-2.62	-3.39	4.35	-2.74	-	-	-	-
BMO Mid-Term US Treasury Bond Index ETF (USD Units)	ZTM.U	28-Feb-17	-3.74	-2.66	-3.83	3.35	-3.84	-4.26	-0.79	-	0.01
BMO Long-Term US Treasury Bond Index ETF	ZTL	28-Feb-17	-6.55	-4.97	-5.48	6.89	-12.59	-8.46	-4.10	-	-1.95
BMO Long-Term US Treasury Bond Index ETF (USD Units)	ZTL.U	28-Feb-17	-10.05	-6.49	-7.69	7.68	-13.97	-11.86	-4.63	-	-2.43
BMO Long-Term US Treasury Bond Index ETF (Hedged Units)	ZTL.F	5-Feb-20	-10.38	-6.61	-7.94	6.82	-15.20	-12.45	-	-	-9.20

Preferred Shares

Name	Ticker	Inception Date	YTD (%)	1 MO (%)	3 MO (%)	6 MO (%)	1 YR (%)	3 YR (%)	5 YR (%)	10 YR (%)	Since Inception
BMO Laddered Preferred Share Index ETF	ZPR	14-Nov-12	12.86	2.27	5.86	25.09	19.33	2.55	5.74	1.63	1.56
BMO Laddered Preferred Share Index ETF (US Dollar Units)	ZPR.U	24-Jan-22	8.62	0.62	3.38	26.01	17.44	-	-	-	-3.64
BMO US Preferred Share Index ETF	ZUP	9-Feb-17	6.32	-1.84	1.10	15.75	12.47	0.11	1.77	-	2.65
BMO US Preferred Share Index ETF (USD Units)	ZUP.U	9-Feb-17	2.33	-3.42	-1.26	16.60	10.69	-3.60	1.22	-	1.93
BMO US Preferred Share Hedged to CAD Index ETF	ZHP	9-Feb-17	2.11	-3.54	-1.46	15.83	9.29	-4.33	0.23	-	0.98

Asset Allocation ETFs

Name	Ticker	Inception Date	YTD (%)	1 MO (%)	3 MO (%)	6 MO (%)	1 YR (%)	3 YR (%)	5 YR (%)	10 YR (%)	Since Inception
BMO All-Equity ETF	ZEQT	24-Jan-22	7.47	-1.96	5.95	17.77	15.76	-	-	-	7.95
BMO Growth ETF	ZGRO	15-Feb-19	5.32	-2.02	4.34	15.09	12.28	5.95	7.64	-	8.45
BMO Balanced ESG ETF	ZESG	16-Jan-20	3.31	-2.26	2.41	13.50	10.79	4.38	-	-	5.58
BMO Balanced ETF	ZBAL	15-Feb-19	3.15	-2.07	2.70	12.41	8.79	3.78	5.64	-	6.35
BMO Balanced ETF (T6 Series)	ZBAL.T	24-Jan-22	3.15	-2.07	2.70	12.41	8.79	-	-	-	3.48
BMO Monthly Income ETF	ZMI	28-Jan-11	2.51	-2.03	1.58	10.66	6.53	4.36	4.66	4.32	5.17
BMO Conservative ETF	ZCON	15-Feb-19	0.95	-2.11	1.03	9.68	5.29	1.59	3.63	-	4.24

Alpha Seeking Strategies

Name	Ticker	Inception Date	YTD (%)	1 MO (%)	3 MO (%)	6 MO (%)	1 YR (%)	3 YR (%)	5 YR (%)	10 YR (%)	Since Inception
BMO ARK Next Generation Internet Fund ETF Series	ARKW	14-Nov-22	1.28	-9.25	9.21	40.64	52.89	-	-	-	-
BMO U.S. All Cap Equity Fund ETF Series	ZACE	7-Jun-21	10.50	-2.44	6.26	22.29	27.01	-	-	-	9.69
BMO ARK Innovation Fund ETF Series	ARKK	14-Nov-22	-13.80	-11.50	-2.19	22.58	22.86	-	-	-	-

Alpha Seeking Strategies (cont.)

Name	Ticker	Inception Date	YTD (%)	1 MO (%)	3 MO (%)	6 MO (%)	1 YR (%)	3 YR (%)	5 YR (%)	10 YR (%)	Since Inception
BMO Women In Leadership Fund	WOMN	29-May-18	4.89	-2.76	1.99	17.86	14.16	6.03	8.48	-	9.11
BMO Global Strategic Bond Fund	ZGSB	29-May-18	0.52	-1.49	0.06	9.56	6.35	-1.40	1.28	-	1.91
BMO Sustainable Global Multi-Sector Bond Fund	ZMSB	29-May-18	-0.31	-1.08	-0.65	4.98	5.55	-0.52	1.64	-	2.25
BMO Tactical Dividend ETF Fund	ZZZD	11-Jan-19	1.35	2.65	1.78	4.15	3.95	5.57	2.06	-	2.87
BMO Core Plus Bond Fund	ZCPB	29-May-18	-2.73	-1.91	-1.56	4.57	-0.16	-2.40	-0.23	-	0.47
BMO Brookfield Global Real Estate Tech Fund ETF Series	TOWR	1-Mar-22	-8.73	-8.29	-5.87	6.39	-2.42	-	-	-	-5.41
BMO Brookfield Global Renewables Infrastructure Fund ETF Series	GRNI	1-Mar-22	-1.61	-0.42	1.73	8.15	-8.71	-	-	-	-4.12
BMO ARK Genomic Revolution Fund ETF Series	ARKG	14-Nov-22	-26.15	-17.67	-16.33	-0.05	-18.70	-	-	-	-

Source: BMO Global Asset Management, Bloomberg, April 30, 2024.

BMO'S Award Winning ETFs

2023 Canada LSEG Lipper Fund Awards – BMO GAM Claims 8 Top Honours

ETFs

- **BMO Low Volatility Canadian Equity ETF (ZLB)** – Best Canadian Equity ETF Fund over 10 years
- **BMO Mid Provincial Bond Index (ZMP)** – Best Canadian Fixed Income ETF Fund over five years
- **BMO MSCI All Country World High Quality Index ETF (ZGQ)** – Best Global Equity ETF Fund over five years
- **BMO Equal Weight Industrials Index ETF (ZIN)** – Best Sector Equity ETF Fund over three years
- **BMO S&P 500 Index ETF (ZSP)** – Best US Equity ETF Fund over five years and Best US Equity ETF Fund over 10 years

Mutual Funds

- **BMO Monthly Dividend Fund Ltd. – Series F** – Best Canadian Fixed Income Balanced Fund over three years
- **BMO World Bond Fund – Series F** – Best Global Fixed Income Fund over 10 years
- **BMO U.S. Small Cap Fund – Series F** – Best US Small/Mid Cap Equity Fund over five years and Best US Small/Mid Cap Equity Fund over 10 years

2023 FundGrade A+

- BMO Conservative ETF (ZCON)
- BMO Discount Bond Index ETF (ZDB)
- BMO Europe High Dividend Covered Call Hedged to CAD ETF (ZWE)
- BMO Global Infrastructure Index ETF (ZGI)
- BMO Growth ETF (ZGRO)
- BMO International Dividend Hedged to CAD ETF (ZDH)
- BMO Long Corporate Bond Index ETF (ZLC)
- BMO Low Volatility Canadian Equity ETF (ZLB)
- BMO Mid Provincial Bond Index ETF (ZMP)
- BMO MSCI All Country World High Quality Index ETF (ZGQ)
- BMO MSCI EAFE Hedged to CAD Index ETF (ZDM)
- BMO MSCI Europe High Quality Hedged to CAD Index ETF (ZEQ)
- BMO MSCI Global ESG Leaders Index ETF (ESGG)
- BMO MSCI USA High Quality Index ETF (ZUQ)
- BMO S&P 500 Index ETF (ZSP)
- BMO S&P US Mid Cap Index ETF (ZMID)
- BMO Short Corporate Bond Index ETF (ZCS)
- BMO Short-Term US TIPS Index ETF (ZTIP)
- BMO Short-Term US Treasury Bond Index ETF (ZTS)



Source : BMO Global Asset Management, Bloomberg, April 30, 2024..

Commissions, management fees and expenses (if applicable) may be associated with investments in mutual funds and exchange traded funds (ETFs). Trailing commissions may be associated with investments in mutual funds. Please read the fund facts, ETF Facts or prospectus of the relevant mutual fund or ETF before investing. Mutual funds and ETFs are not guaranteed, their values change frequently and past performance may not be repeated.

For a summary of the risks of an investment in BMO Mutual Funds or BMO ETFs, please see the specific risks set out in the prospectus of the relevant mutual fund or ETF. BMO ETFs trade like stocks, fluctuate in market value and may trade at a discount to their net asset value, which may increase the risk of loss. Distributions are not guaranteed and are subject to change and/or elimination.

BMO Mutual Funds are offered by BMO Investments Inc., a financial services firm and separate entity from Bank of Montreal. BMO ETFs are managed and administered by BMO Asset Management Inc., an investment fund manager and portfolio manager and separate legal entity from Bank of Montreal.

®/™Registered trademarks/trademark of Bank of Montreal, used under licence.

The ETF referred to herein is not sponsored, endorsed, or promoted by MSCI and MSCI bears no liability with respect to the ETF or any index on which such ETF is based. The ETF's prospectus contains a more detailed description of the limited relationship MSCI has with the Manager and any related ETF.

The Index is a product of S&P Dow Jones Indices LLC or its affiliates ("SPDJ"), and has been licensed for use by the Manager. S&P®, S&P 500®, US 500, The 500, iBoxx®, iTraxx® and CDX® are trademarks of S&P Global, Inc. or its affiliates ("S&P") and Dow Jones® is a registered trademark of Dow Jones Trademark Holdings LLC ("Dow Jones"), and these trademarks have been licensed for use by SPDJ and sublicensed for certain purposes by the Manager. The ETF is not sponsored, endorsed, sold or promoted by SPDJ, Dow Jones, S&P, their respective affiliates, and none of such parties make any representation regarding the advisability of investing in such product(s) nor do they have any liability for any errors, omissions, or interruptions of the Index.

About the LSEG Lipper Fund Awards

The LSEG Lipper Fund Awards, granted annually, highlight funds and fund companies that have excelled in delivering consistently strong risk-adjusted performance relative to their peers.

The LSEG Lipper Fund Awards are based on the Lipper Leader for Consistent Return rating, which is a risk-adjusted performance measure calculated over 36, 60 and 120 months. The fund with the highest Lipper Leader for Consistent Return (Effective Return) value in each eligible classification wins the LSEG Lipper Fund Award.

For more information, see lipperfundawards.com. Although LSEG Lipper makes reasonable efforts to ensure the accuracy and reliability of the data contained herein, the accuracy is not guaranteed by LSEG Lipper. The highest 20% of funds in each classification are named Lipper Leaders for Consistent Return, the next 20% receive a rating of 4, the middle 20% are rated 3, the next 20% are rated 2 and the lowest 20% are rated 1. BMO Monthly Dividend Fund Ltd. (Series F) was awarded the 2023 LSEG Lipper Fund Award in the Canadian Fixed Income Balanced for 3 year periods ending October 2023 out of a classification total of 356] funds (three years), 318 funds (five years), 236 funds (ten years). The fund's performance for the period ended October, 2023] was -3.85%(one year), 6.85 (three years), 2.10% (five years), 2.40% (ten years) and 4.47% (since inception on July 15, 2003).

BMO World Bond Fund (Series F) was awarded the 2023 LSEG Lipper Fund Award in the Global Fixed Income category for 10 years periods ending October 2023 out of a classification total of 352 funds (three years), 252 funds (five years), 103 funds (ten years). The fund's performance for the period ended October 2023 was 0.08% (one year), -4.17% (three years), 0.17% (five years), 2.35% (ten years) and 3.04% (since inception on November 3, 2008).

BMO U.S. Small Cap Fund (Series F) was awarded the 2023 LSEG Lipper Fund Award in the US Small/Mid Cap Equity category for 3 and 5 years periods ending October 2023 out of a classification total of 269 funds (three years) and 202 funds (five years). The fund's performance for the period ended October 2023 was 0.69% (one year), 14.27% (three years), 9.35% (five years), and 7.09% (since inception on May 14, 2018).

BMO Low Volatility Canadian Equity ETF was awarded the 2023 LSEG Lipper Fund Award in the Canadian Equity ETF category for 10 years periods ending October 2023 out of a classification total of 585 funds (three years), 512 funds (five years), 338 funds (ten years). The fund's performance for the period ended October 2023 was 3.02% (one year), 9.86% (three years), 8.95% (five years), 9.49% (ten years) and 10.95% (since inception on October 21, 2011).

BMO Mid Provincial Bond Index ETF was awarded the 2023 LSEG Lipper Fund Award in the Canadian Fixed Income ETF category for 10 years periods ending October 2023 out of a classification total of 552 funds (three years), 491 funds (five years), 314 funds (ten years). The fund's performance for the period ended October 2023 was -0.90% (one year), -4.59% (three years), 0.46% (five years), 1.62% (ten years) and 1.47% (since inception on March 19, 2013).

BMO MSCI All Country World High Quality Index ETF was awarded the 2023 LSEG Lipper Fund Award in the Global Equity ETF category for 5 years periods ending October 2023 out of a classification total of 1807 funds (three years) and 1597 funds (five years). The fund's performance for the period ended October 2023 was 22.98% (one year), 8.70% (three years), 12.33% (five years), and 12.29% (since inception on November 5, 2014).

BMO Equal Weight Industrials Index ETF was awarded the 2023 LSEG Lipper Fund Award in the Sector Equity ETF category for 3 years periods ending October 2023 out of a classification total of 169 funds (three years), 132 funds (five years), 76 funds (ten years). The fund's performance for the period ended October 2023 was 4.84% (one year), 11.52% (three years), 5.89% (five years), 6.86% (ten years) and 9.47% (since inception on November 14, 2012).

BMO S&P 500 Index ETF was awarded the 2023 LSEG Lipper Fund Award in the US Equity ETF category for 5 and 10 years periods ending October 2023 out of a classification total of 1374 funds (three years), 1138 funds (five years), 600 funds (ten years). The fund's performance for the period ended October 2023 was 11.70% (one year), 11.47% (three years), 11.78% (five years), 13.95% (ten years) and 15.90% (since inception on November 14, 2012).

®/™Registered trademarks/trademark of Bank of Montreal, used under licence.

About Fundata Canada Inc.'s FundGrade A+® Rating

FundGrade A+® is used with permission from Fundata Canada Inc., all rights reserved. The annual FundGrade A+® Awards are presented by Fundata Canada Inc. to recognize the "best of the best" among Canadian investment funds. The FundGrade A+® calculation is supplemental to the monthly FundGrade ratings and is calculated at the end of each calendar year. The FundGrade rating system evaluates funds based on their risk-adjusted performance, measured by Sharpe Ratio, Sortino Ratio, and Information Ratio. The score for each ratio is calculated individually, covering all time periods from 2 to 10 years. The scores are then weighted equally in calculating a monthly FundGrade. The top 10% of funds earn an A Grade; the next 20% of funds earn a B Grade; the next 40% of funds earn a C Grade; the next 20% of funds receive a D Grade; and the lowest 10% of funds receive an E Grade. To be eligible, a fund must have received a FundGrade rating every month in the previous year. The FundGrade A+® uses a GPA-style calculation, where each monthly FundGrade from "A" to "E" receives a score from 4 to 0, respectively. A fund's average score for the year determines its GPA. Any fund with a GPA of 3.5 or greater is awarded a FundGrade A+® Award. For more information, see www.FundGradeAwards.com. Although Fundata makes every effort to ensure the accuracy and reliability of the data contained herein, the accuracy is not guaranteed by Fundata.

Performance for BMO Conservative ETF (TSX: ZCON) for the period ended December 31, 2023 is as followed: 1 year, 10.29%; 3 years, 1.15%; 5 years, N/A; and since inception, 4.34% (2019-02-15). Performance for BMO Discount Bond Index ETF (TSX: ZDBI) for the period ended December 31, 2023 is as followed: 1 year, 6.59%; 3 years, -2.97%; 5 years, 1.33%; and since inception, 2.09% (2014-02-10). Performance for BMO Europe High Dividend Covered Call Hedged to CAD ETF (TSX: ZWE) for the period ended December 31, 2023 is as followed: 1 year, 14.67%; 3 years, 11.09%; 5 years, 8.83%; and since inception, 7.02% (2015-09-09). Performance for BMO Global Infrastructure Index ETF (TSX: ZGI) for the period ended December 31, 2023 is as followed: 1 year, -0.64%; 3 years, 9.58%; 5 years, 8.09%; and 10 years, 8.27%. Performance for BMO Growth ETF (TSX: ZGRO) for the period ended December 31, 2023 is as followed: 1 year, 14.65%; 3 years, 5.62%; 5 years, N/A; and since inception, 7.91% (2019-02-15). Performance for BMO International Dividend Hedged to CAD ETF (TSX: ZDH) for the period ending December 31, 2023 is as followed: 1 year, 18.62%; 3 years, 13.30%; 5 years, 9.61%; and since inception, 7.74% (2015-09-02). Performance for BMO Long Corporate Bond Index ETF (TSX: ZLC) for the period ended December 31, 2023 is as followed: 1 year, 11.69%; 3 years, -4.31%; 5 years, 1.97%; and 10 years, 3.87%. Performance for BMO Low Volatility Canadian Equity ETF (TSX: ZLB) for the period ended December 31, 2023 is as followed: 1 year, 9.39%; 3 years, 10.22%; 5 years, 10.64%; and 10 years 10.32%. Performance for BMO Mid Provincial Bond Index ETF (TSX: ZMP) for the period ended December 31, 2023 is as followed: 1 year, 6.14%; 3 years, -2.47%; 5 years, 1.43%; and 10 years, 2.47%. Performance for BMO MSCI All Country World High Quality Index ETF (TSX: ZGQ) for the period ended December 31, 2023 is as followed: 1 year, 29.23%; 3 years, 8.51%; 5 years, 15.02%; and since inception, 13.12% (2014-11-05). Performance for BMO MSCI EAFE Hedged to CAD Index ETF (TSX: ZDM) for the period ended December 31, 2023 is as followed: 1 year, 18.37%; 3 years, 9.82%; 5 years, 10.43%; and 10 years, 7.27%. Performance for BMO MSCI Europe High Quality Hedged to CAD Index ETF (TSX: ZEQ) for the period ended December 31, 2023 is as followed: 1 year, 14.85%; 3 years, 7.99%; 5 years, 12.27%; and since inception, 9.46% (2014-02-10). Performance for BMO MSCI Global ESG Leaders Index ETF (TSX: ESGG) for the period December 31, 2023 is as followed: 1 year, 22.75%; 3 years, 9.37%; 5 years, N/A; and since inception 9.54% (2020-01-16). Performance for BMO MSCI USA High Quality Index ETF (TSX: ZUQ) for the period ended December 31, 2023 is as followed: 1 year, 32.66%; 3 years, 11.26%; 5 years, 16.78%; and since inception, 15.27% (2014-11-05). Performance for BMO S&P 500 Index ETF (TSX: ZSP) for the period ended December 31, 2023 is as followed: 1 year, 23.08%; 3 years, 11.11%; 5 years, 14.59%; and 10 years, 14.09%. Performance for BMO S&P US Mid Cap Index ETF500 Index ETF (TSX: ZMID) for the period ended December 31, 2023 is as followed: 1 year, 13.54%; 3 years, 9.07%; and since inception 8.92% (2020-02-05). Performance for BMO Short Corporate Bond Index ETF (TSX: ZCS) for the period ended December 31, 2023 is as followed: 1 year, 6.58%; 3 years, 0.38%; 5 years, 2.32%; and 10 years, 2.21%. Performance for BMO Short-Term US TIPS Index ETF (NEO: ZTIP) for the period ended December 31, 2023 is as followed: 1 year, 2.36%; 3 years, N/A; 5 years, N/A; and since inception 3.77% (2021-01-20). Performance for BMO Short-Term US Treasury Bond Index ETF (TSX: ZTS) for the period ended December 31, 2023 is as followed: 1 year, 1.97%; 3 years, 0.27%; 5 years, 0.35%; and since inception 0.84% (2017-02-28). Performance for BMO Low Volatility U.S. Equity ETF Fund (Series A) for the period ended December 31, 2023 is as followed: 1 year, -4.17%; 3 years, 6.65%; 5 years, N/A; and since inception, 5.95% (2020-08-17). Performance for BMO Sustainable Global Multi-Sector Bond Fund (Series A) for the period ended December 31, 2023 is as followed: 1 year, 8.08%; 3 years, -0.96%; 5 years, 2.38%; and since inception, 1.74% (2018-05-14). Performance for BMO Target Education 2040 Portfolio (Series A) for the period ended December 31, 2023 is as followed: 1 year, 10.65%; 3 years, 4.76%; 5 years, N/A; and since inception, 6.22% (2020-08-17). Performance for BMO U.S. Small Cap Fund (Series A) for the period ended December 31, 2023 is as followed: 1 year, 13.21%; 3 years, 11.57%; 5 years, 12.03%; and since inception, 8.06% (2018-05-14).